

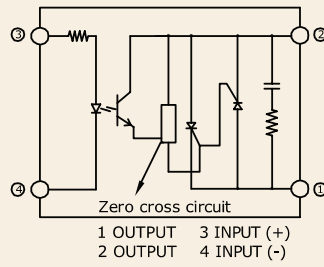
Series: 018 SJ/K

**Single Phase SSR (240~480VAC)
25Amps**

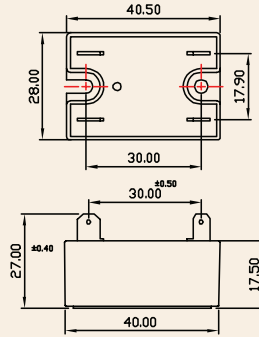
INPUT : DC Control
OUTPUT : SCR



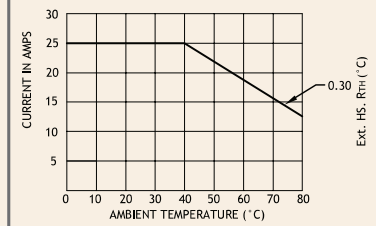
Schematic



Mechanical Drawing



Derating Curve



Salient Features

- Opto Isolation 4000 VAC • Zero Voltage Turn On/Random Turn On • TTL Compatible (Sink mode)
- LED for Status Indication • Output: NO/NC Configuration • Built-In Snubber • Reverse Voltage Protection
- Panel/DIN Mountable

ELECTRICAL SPECIFICATION @ TA = 25°C			NOTE: FOR RANDOM T-ON SSR, ADD LETTER 'K' IN PLACE OF 'J'	
PARAMETER	SYMBOL	UNIT	PRODUCT PART NUMBERS	
			018 SJDA 242500	018 SJDA 482500

INPUT

PARAMETER	SYMBOL	UNIT	018 SJDA 242500	018 SJDA 482500
Control Voltage Range		Vdc	3-32	3-32
Control Current Range		mA	1-20	1-20
Pick-up Voltage		Vdc	3.0	3.0
Drop-out Voltage		Vdc	1.0	1.0
Input Resistance		KOhms	1.6	1.6

OUTPUT

PARAMETER	SYMBOL	UNIT	018 SJDA 242500	018 SJDA 482500
RMS on state Current	I_T	A	25	25
Mains Control Voltage	V_{rms}	Vac	24-330	48-480
Repetitive Peak Off state Voltage	V_{drm}	Vpk	600	800
Peak one cycle surge Current (Non-Rep)	I_{TSM}	A	300	300
On state Voltage Drop	V_{TM}	Vac	1.6	1.6
Off state Leakage current @ rated voltage	I_{drm}	mA	5	5
Zero T-On Voltage		Vpk	25	25
Critical Rate of Rise Off state Voltage	dv/dt	V/ μ s	300	300
Holding Current	I_H	mA	100	100
Fusing Current	I^2T	A ² s	510	510
Thermal Resistance (Junction to case)	RTH	°C/W	2.35	2.35
Turn-On [Zero/Random]	T-On	ms	10/0.1	10/0.1
Turn-Off [Zero/Random]	T-Off	ms	10	10
Frequency Range	f	Hz	47~63	47~63
Operating Temperature	T Oper	°C	-30 to +80	-30 to +80

