

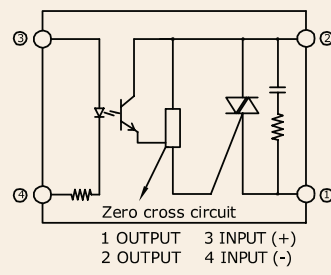
## Series: 018 J/K

**Single Phase SSR (480VAC)  
10~25Amps**

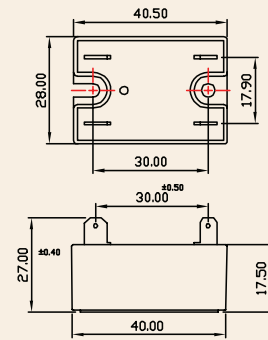
INPUT : DC Control  
OUTPUT : Triac



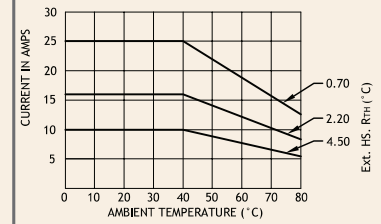
Schematic



Mechanical Drawing



Derating Curve



### Salient Features

- Opto Isolation 4000 VAC • Zero Voltage Turn On/Random Turn On • TTL Compatible (Sink mode)
- LED for Status Indication • Output: NO/NC Configuration • Built-In Snubber • Reverse Voltage Protection
- Panel/DIN Mountable

ELECTRICAL SPECIFICATION @ TA = 25°C			NOTE: FOR RANDOM T-ON SSR, ADD LETTER 'K' IN PLACE OF 'J'		
PARAMETER	SYMBOL	UNIT	PRODUCT PART NUMBERS		
			018 JDA 481000	018 JDA 481600	018 JDA 482500

### INPUT

PARAMETER	SYMBOL	UNIT	018 JDA 481000	018 JDA 481600	018 JDA 482500
Control Voltage Range		Vdc	3-32	3-32	3-32
Control Current Range		mA	1-20	1-20	1-20
Pick-up Voltage		Vdc	3.0	3.0	3.0
Drop-out Voltage		Vdc	1.0	1.0	1.0
Input Resistance		KOhms	1.6	1.6	1.6

### OUTPUT

PARAMETER	SYMBOL	UNIT	018 JDA 481000	018 JDA 481600	018 JDA 482500
RMS on state Current	IT	A	10	16	25
Mains Control Voltage	Vrms	Vac	48-480	48-480	48-480
Repetitive Peak Off state Voltage	Vdrms	Vpk	800	800	800
Peak one cycle surge Current (Non-Rep)	ITSM	A	100	160	208
On state Voltage Drop	VTM	Vac	1.6	1.6	1.6
Off state Leakage current @ rated voltage	Idrms	mA	5	5	5
Zero T-On Voltage		Vpk	25	25	25
Critical Rate of Rise Off state Voltage	dv/dt	V/μs	400	400	475
Holding Current	IH	mA	50	50	100
Fusing Current	I²T	A²s	55	144	259
Thermal Resistance (Junction to case)	RTH	°C/W	2.4	2.1	2.0
Turn-On [Zero/Random]	T-On	ms	10/0.1	10/0.1	10/0.1
Turn-Off [Zero/Random]	T-Off	ms	10	10	10
Frequency Range	f	Hz	47~63	47~63	47~63
Operating Temperature	T Oper	°C	-30 to +80	-30 to +80	-30 to +80

