

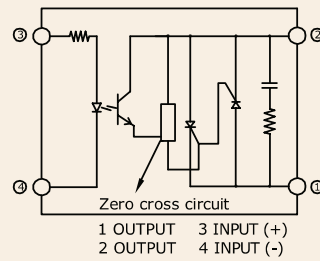
Series: 001 SJ/K

Single Phase SSR (480VAC) 60~75Amps

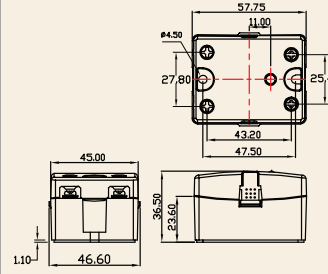
INPUT : DC Control
OUTPUT : Back to Back SCR



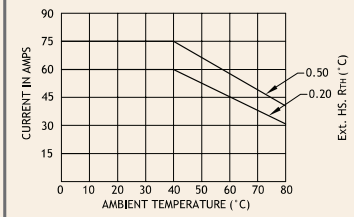
Schematic



Mechanical Drawing



Derating Curve



Salient Features

- Opto Isolation 4000 VAC • Zero Voltage Turn On/Random Turn On • TTL/CMOS Compatible (Sink mode)
- Output: NO/NC Configuration • Safety Cover Provision • Built-in Snubber • Panel Mountable/DIN Mountable
- Reverse Voltage Protection for DC/AC • Transient Protection Available (Optional)

ELECTRICAL SPECIFICATION @ TA = 25°C			NOTE: FOR RANDOM T-ON SSR, ADD LETTER 'K' IN PLACE OF 'J'	
PARAMETER	SYMBOL	UNIT	PRODUCT PART NUMBERS	
			001 SJDA 486000	001 SJDA 487500
INPUT				
Control Voltage Range		Vdc	3-32	3-32
Control Current Range		mA	1-25	1-25
Pick-up Voltage		Vdc	3.0	3.0
Drop-out Voltage		Vdc	1.0	1.0
Input Resistance		KOhms	1.3	1.3
OUTPUT				
RMS on state Current	I_T	A	60	75
Mains Control Voltage	V_{rms}	Vac	48-480	48-480
Rep Peak Off state Voltage	V_{drm}	Vpk	800	800
Peak one cycle surge Current (Non-Rep)	I_{TSM}	A	800	1400
On state Voltage Drop	V_{TM}	Vac	1.6	1.6
Off state Leakage current	I_{drm}	mA	5	5
Zero T-On Voltage		Vpk	25	25
Critical Rate of Rise Off state Voltage	dv/dt	V/μs	475	500
Holding Current	I_H	mA	80	200
Fusing Current	I^2T	A ² s	3745	7200
Thermal Resistance	R_{TH}	°C/W	0.86	0.27
Turn-On [Zero/Random]	T-On	ms	10/0.1	10/0.1
Turn-Off [Zero/Random]	T-Off	ms	10	10
Frequency Range	f	Hz	47~63	47~63
Operating Temp	T Oper	°C	-30 to +80	-30 to +80

