

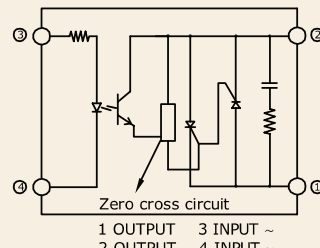
## Series: 001 SJ/K

### Single Phase SSR (480VAC) 60~75Amps

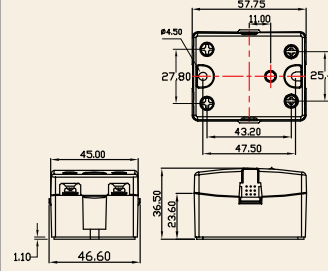
INPUT : AC Control  
OUTPUT : Back to Back SCR



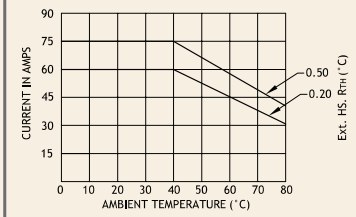
Schematic



Mechanical Drawing



Derating Curve



#### Salient Features

- Opto Isolation 4000 VAC • Zero Voltage Turn On/Random Turn On • TTL/CMOS Compatible (Sink mode)
- Output: NO/NC Configuration • Safety Cover Provision • Built-in Snubber • Panel Mountable/DIN Mountable
- Transient Protection Available (Optional)

ELECTRICAL SPECIFICATION @ TA = 25°C			NOTE: FOR RANDOM T-ON SSR, ADD LETTER 'K' IN PLACE OF 'J'	
PARAMETER	SYMBOL	UNIT	PRODUCT PART NUMBERS	
			001 SJAA 486028	001 SJAA 487528
<b>INPUT</b>				
Control Voltage Range		Vac	90-280	90-280
Control Current Range		mA	9-30	9-30
Pick-up Voltage		Vac	90	90
Drop-out Voltage		Vac	45	45
Input Resistance		KOhms	9.5	9.5
<b>OUTPUT</b>				
RMS on state Current	I <sub>T</sub>	A	60	75
Mains Control Voltage	V <sub>rms</sub>	Vac	48-480	48-480
Rep Peak Off state Voltage	V <sub>drm</sub>	Vpk	800	800
Peak one cycle surge Current (Non-Rep)	I <sub>TSM</sub>	A	800	1400
On state Voltage Drop	V <sub>TM</sub>	Vac	1.6	1.6
Off state Leakage current	I <sub>drm</sub>	mA	5	5
Zero T-On Voltage		Vpk	25	25
Critical Rate of Rise Off state Voltage	dv/dt	V/μs	475	500
Holding Current	I <sub>H</sub>	mA	80	200
Fusing Current	I <sup>2</sup> T	A <sup>2</sup> s	3745	7200
Thermal Resistance	R <sub>TH</sub>	°C/W	0.86	0.27
Turn-On	T-On	ms	40	40
Turn-Off	T-Off	ms	80	80
Frequency Range	f	Hz	47~63	47~63
Operating Temp	T Oper	°C	-30 to +80	-30 to +80

