

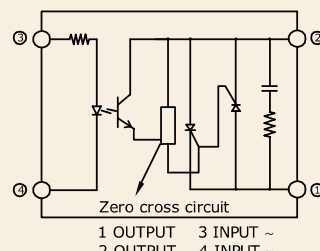
## Series: 001 SJ/K

### Single Phase SSR (480VAC) 10~50Amps

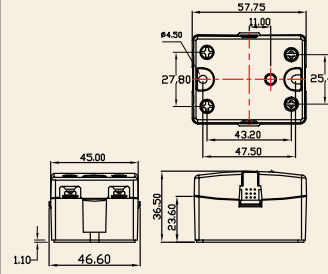
INPUT : AC Control  
OUTPUT : Back to Back SCR



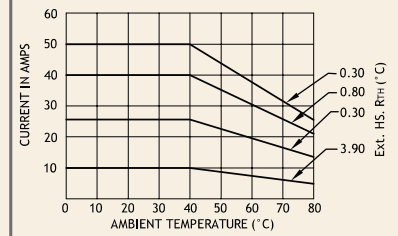
Schematic



Mechanical Drawing



Derating Curve



#### Salient Features

- Opto Isolation 4000 VAC • Zero Voltage Turn On/Random Turn On • TTL/CMOS Compatible (Sink mode)
- Output: NO/NC Configuration • Safety Cover Provision • Built-in Snubber • Panel Mountable/DIN Mountable
- Transient Protection Available (Optional)

ELECTRICAL SPECIFICATION @ TA = 25°C			NOTE: FOR RANDOM T-ON SSR, ADD LETTER 'K' IN PLACE OF 'J'			
PARAMETER	SYMBOL	UNIT	PRODUCT PART NUMBERS			
			001 SJAA 481028	001 SJAA 482528	001 SJAA 484028	001 SJAA 485028

#### INPUT

PARAMETER	SYMBOL	UNIT	001 SJAA 481028	001 SJAA 482528	001 SJAA 484028	001 SJAA 485028
Control Voltage Range		Vac	90-280	90-280	90-280	90-280
Control Current Range		mA	9-30	9-30	9-30	9-30
Pick-up Voltage		Vac	90	90	90	90
Drop-out Voltage		Vac	45	45	45	45
Input Resistance		KOhms	9.5	9.5	9.5	9.5

#### OUTPUT

PARAMETER	SYMBOL	UNIT	001 SJAA 481028	001 SJAA 482528	001 SJAA 484028	001 SJAA 485028
RMS on state Current	IT	A	10	25	40	50
Mains Control Voltage	Vrms	Vac	48-480	48-480	48-480	48-480
Rep Peak Off state Voltage	Vdrm	Vpk	800	800	800	800
Peak one cycle surge Current (Non-Rep)	ITSM	A	83	300	800	520
On state Voltage Drop	V <sub>TM</sub>	Vac	1.6	1.6	1.6	1.6
Off state Leakage current	Idrm	mA	5	5	5	5
Zero T-On Voltage		Vpk	25	25	25	25
Critical Rate of Rise Off state Voltage	dv/dt	V/μs	200	300	500	1000
Holding Current	I <sub>H</sub>	mA	30	50	80	150
Fusing Current	I <sup>2</sup> T	A <sup>2</sup> s	41	510	3745	1350
Thermal Resistance	R <sub>TH</sub>	°C/W	3.0	2.35	0.86	1.0
Turn-On	T-On	ms	40	40	40	40
Turn-Off	T-Off	ms	80	80	80	80
Frequency Range	f	Hz	47~63	47~63	47~63	47~63
Operating Temp	T Oper	°C	-30 to +80	-30 to +80	-30 to +80	-30 to +80

