

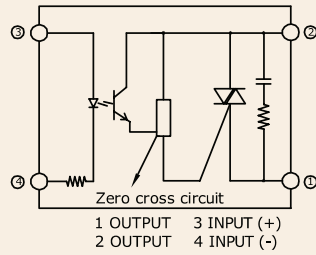
## Series: 001 J/K

**Single Phase SSR (480VAC)  
10~60Amps**

INPUT : DC Control  
OUTPUT : Triac

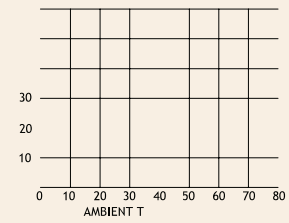


Schematic



Mechanical Drawing

Derating Curve



### Salient Features

- Opto Isolation 4000 VAC • Zero Voltage Turn On/Random Turn On • TTL/CMOS Compatible (Sink mode)
- Output: NO/NC Configuration • Safety Cover Provision • Built-in Snubber • Panel Mountable/DIN Mountable
- Reverse Voltage Protection for DC/AC • Transient Protection Available (Optional)

ELECTRICAL SPECIFICATION @ TA = 25°C			NOTE: FOR RANDOM T-ON SSR, ADD LETTER 'K' IN PLACE OF 'J'				
PARAMETER	SYMBOL	UNIT	PRODUCT PART NUMBERS				
			001 JDA 481000	001 JDA 481600	001 JDA 482500	001 JDA 484000	001 JDA 486000

#### INPUT

PARAMETER	SYMBOL	UNIT	001 JDA 481000	001 JDA 481600	001 JDA 482500	001 JDA 484000	001 JDA 486000
Control Voltage Range		Vdc	3-32	3-32	3-32	3-32	4-32
Control Current Range		mA	1-25	1-25	1-25	1-25	1-25
Pick-up Voltage		Vdc	3.0	3.0	3.0	3.0	4.0
Drop-out Voltage		Vdc	1.0	1.0	1.0	1.0	1.0
Input Resistance		KOhms	1.3	1.3	1.3	1.3	1.3

#### OUTPUT

PARAMETER	SYMBOL	UNIT	001 JDA 481000	001 JDA 481600	001 JDA 482500	001 JDA 484000	001 JDA 486000
RMS on state Current	IT	A	10	16	25	40	60
Mains Control Voltage	Vrms	Vac	48-480	48-480	48-480	48-480	48-480
Rep Peak Off state Voltage	Vdrms	Vpk	800	800	800	800	800
Peak one cycle surge Current (Non-Rep)	ITSM	A	100	160	250	400	750
On state Voltage Drop	VTM	Vac	1.6	1.6	1.6	1.6	1.6
Off state Leakage current	Idrms	mA	5	5	5	5	5
Zero T-On Voltage		Vpk	25	25	25	25	25
Critical Rate of Rise Off state Voltage	dv/dt	V/μs	400	400	500	500	500
Holding Current	IH	mA	50	50	75	80	100
Fusing Current	I²T	A²s	55	144	340	880	2800
Thermal Resistance	RTH	°C/W	2.4	2.1	0.9	0.6	0.6
Turn-On [Zero/Random]	T-On	ms	10/0.1	10/0.1	10/0.1	10/0.1	10/0.1
Turn-Off [Zero/Random]	T-Off	ms	10	10	10	10	10
Frequency Range	f	Hz	47~63	47~63	47~63	47~63	47~63
Operating Temp	T Oper	°C	-30 to +80	-30 to +80	-30 to +80	-30 to +80	-30 to +80