

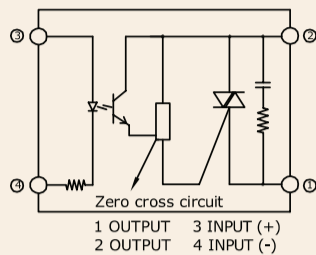
## Series: 001 J/K

### Single Phase SSR (240VAC) 10~60Amps

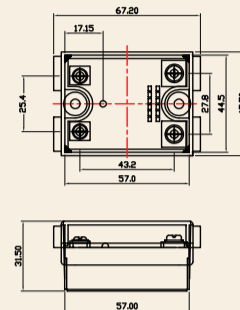
INPUT : DC Control  
OUTPUT : Triac



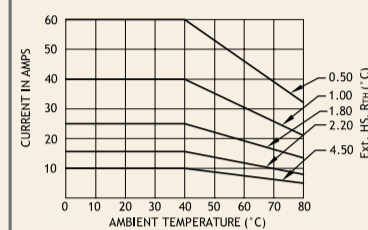
Schematic



Mechanical Drawing



Derating Curve



#### Salient Features

- Opto Isolation 4000 VAC • Zero Voltage Turn On/Random Turn On • TTL/CMOS Compatible (Sink mode)
- Output: NO/NC Configuration • Safety Cover Provision • Built-in Snubber • Panel Mountable/DIN Mountable
- Reverse Voltage Protection for DC/AC • Transient Protection Available (Optional)

#### ELECTRICAL SPECIFICATION @ TA = 25°C

NOTE: FOR RANDOM T-ON SSR, ADD LETTER 'K' IN PLACE OF 'J'

PARAMETER	SYMBOL	UNIT	PRODUCT PART NUMBERS				
			001 JDA 331000	001 JDA 331600	001 JDA 332500	001 JDA 334000	001 JDA 336000

#### INPUT

PARAMETER	SYMBOL	UNIT	001 JDA 331000	001 JDA 331600	001 JDA 332500	001 JDA 334000	001 JDA 336000
Control Voltage Range		Vdc	3-32	3-32	3-32	3-32	4-32
Control Current Range		mA	1-20	1-20	1-20	1-20	1-25
Pick-up Voltage		Vdc	3.0	3.0	3.0	3.0	4.0
Drop-out Voltage		Vdc	1.0	1.0	1.0	1.0	1.0
Input Resistance		KOhms	1.6	1.6	1.6	1.6	1.6

#### OUTPUT

PARAMETER	SYMBOL	UNIT	001 JDA 331000	001 JDA 331600	001 JDA 332500	001 JDA 334000	001 JDA 336000
RMS on state Current	IT	A	10	16	25	40	60
Mains Control Voltage	Vrms	Vac	24-330	24-330	24-330	24-330	24-330
Rep Peak Off state Voltage	Vdrm	Vpk	600	600	600	600	600
Peak one cycle surge Current (Non-Rep)	ITSM	A	100	160	250	400	750
On state Voltage Drop	V <sub>TM</sub>	Vac	1.6	1.6	1.6	1.6	1.6
Off state Leakage current	Idrm	mA	5	5	5	5	5
Zero T-On Voltage		Vpk	25	25	25	25	25
Critical Rate of Rise Off state Voltage	dv/dt	V/μs	400	400	500	500	500
Holding Current	I <sub>H</sub>	mA	50	50	75	80	100
Fusing Current	I <sup>2</sup> T	A <sup>2</sup> s	55	144	340	880	2800
Thermal Resistance	R <sub>TH</sub>	°C/W	2.4	2.1	0.9	0.6	0.6
Turn-On [Zero/Random]	T-On	ms	10/0.1	10/0.1	10/0.1	10/0.1	10/0.1
Turn-Off [Zero/Random]	T-Off	ms	10	10	10	10	10
Frequency Range	f	Hz	47~63	47~63	47~63	47~63	47~63
Operating Temp	T Oper	°C	-30 to +80	-30 to +80	-30 to +80	-30 to +80	-30 to +80

