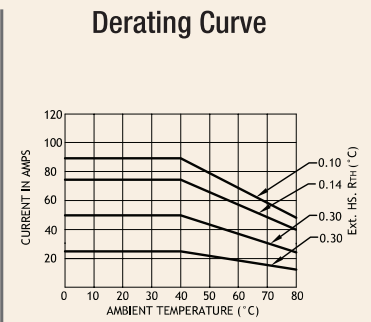
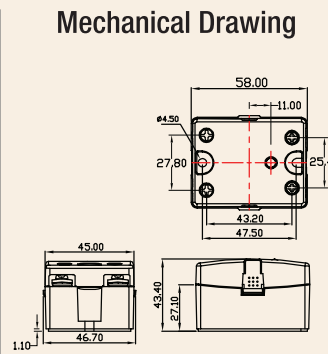
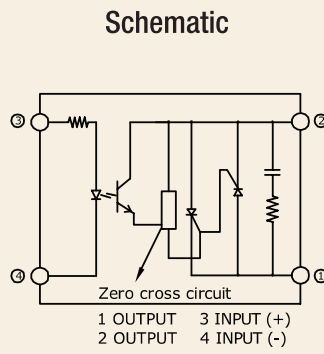


Series: 001/020 SJ/K

**Single Phase SSR (480~660VAC)
25~90Amps**

INPUT : DC Control
OUTPUT : Direct Copper Bonded Back-to-Back SCR (25~90Amps)



Salient Features

- Opto Isolation 4000 VAC • Zero Voltage Turn On/Random Turn On • Reverse Voltage Protection • TTL/CMOS Compatible (Sink mode) • Output : NO Configuration • Safety cover provision • Built-In Snubber • Higher load cycle resistance
- High thermal cycling capacity • High Fusing current • Chassis Mountable / DIN Mountable with Integral heat sink.

ELECTRICAL SPECIFICATION @ TA = 25°C			NOTE: FOR RANDOM T-ON SSR, ADD LETTER 'KD' IN PLACE OF 'D'			
PARAMETER	SYMBOL	UNIT	PRODUCT PART NUMBERS			
			001 SJDA 602500	020 SJDA 605000	020 SJDA 607500	020 SJDA 609000

INPUT

PARAMETER	SYMBOL	UNIT	001 SJDA 602500	020 SJDA 605000	020 SJDA 607500	020 SJDA 609000
Control Voltage Range		Vdc	4-32	4-32	4-32	4-32
Control Current Range		mA	1-25	8-30	8-30	8-30
Pick-up Voltage		Vdc	4.0	4.0	4.0	4.0
Drop-out Voltage		Vdc	1.0	1.0	1.0	1.0
Input Resistance		KOhms	1.3	1.3	1.3	1.3

OUTPUT

PARAMETER	SYMBOL	UNIT	001 SJDA 602500	020 SJDA 605000	020 SJDA 607500	020 SJDA 609000
RMS on state Current	IT	A	25	50	75	90
Mains Control Voltage	Vrms	Vac	48-660	48-660	48-660	48-660
Peak Off state Voltage	Vdrm	Vpk	1200	1200	1200	1200
Peak one cycle surge Current (Non-Rep)	ITSM	A	300	520	750	870
On state Voltage Drop	V _{TM}	Vac	1.6	1.6	1.6	1.6
Off state Leakage current	Idrm	mA	5	5	5	5
Zero T-On Voltage		Vpk	25	25	25	25
Critical Rate of Rise Off State Voltage	dv/dt	V/μs	500	1000	1000	1000
Holding Current	I _H	mA	100	150	200	100
Fusing Current	I ² T	A ² s	450	1350	2812	3780
Thermal Resistance	R _{TH}	°C/W	1.5	1.0	0.6	0.8
Turn-On [Zero/Random]	T-On	ms	10/0.1	10/0.1	10/0.1	10/0.1
Turn-Off [Zero/Random]	T-Off	ms	10	10	10	10
Frequency Range	f	Hz	47~63	47~63	47~63	47~63
Operating Temp	T Oper	°C	-30 to +80	-30 to +80	-30 to +80	-30 to +80

