

## KWK Resistors India Private Limited

Started in 2013 and formed out of a Joint venture between three leading power resistors manufacturers - KS Instruments Pvt Ltd, India; KRAH Group, Germany and Widap Switzerland.

With a backing of three leading resistor producers and the team running the company having over 30 years of experience designing and manufacturing resistors, we cannot help but provide the best in power Resistors.

Over 30% of our sales are in custom Resistors and assemblies. So we have learnt over the years to listen very closely to our customer requirements and build products around them.

KWK Leverages on the strengths of the KRAH group, one of the world's largest power resistors groups with strengths largely in Automotive and industrial Resistors  
And Widap, Switzerland a leading manufacturer of Resistive load banks and Transit Resistors.

KS Instruments have over 35 Years of designing and manufacturing industrial application Resistors.  
Together we commit to produce Power Resistors to surpass Customer expectations.



### KWK Resistors India Private Limited

#72, 3rd main, 1st stage  
Industrial Suburb, Yeshwanthpur  
Bangalore - 560022  
Karnataka, India  
Phone1: +91 80 23370046  
Phone2: +91 80 23370038  
Mobile : +91 99806 66033  
email: [contact@kwk-resistors.in](mailto:contact@kwk-resistors.in)

[www.kwk-resistors.in](http://www.kwk-resistors.in)

**KWK Resistors India Private Limited**  
Power resistors for various industries



[www.kwk-resistors.in](http://www.kwk-resistors.in)

[www.kwk-resistors.in](http://www.kwk-resistors.in)



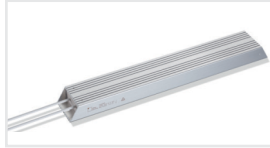
# KWK Resistors India Private Limited

## Power resistors for various industries

### ALUMINIUM ENCASED HIGH POWER RESISTORS



**KHA**  
for mounting on heat sink, IP00 to Ip65  
Power rating:  
5 ... 300 W or 4...75 W  
without heat sink  
Resistance range:  
R01 ... 100K  
Tolerance:  
±0,25% ... ±5%  
Dimensions: L x W x H  
16.5 x 17 x 9 ... 127 x 73 x 45 mm



**KABR**  
highest power available, particularly pulse resistant, ip65  
Power rating:  
60 ... 5000 W or  
55 ... 1800 W  
Resistance range:  
R10 ... 7K5  
Tolerance:  
±1% ... ±10%  
Dimensions: L x W x H  
115 x 40 x 20 ... 550 x 103 x 52 mm



**KSAH**  
slimmest resistor, pulse resistant, ip65  
Power rating:  
150 ... 500 W or  
75... 250 [W/o Heating]  
Resistance range:  
R10 ... 3K0  
Tolerance:  
±1% ... ±10%  
Dimensions: L x W x H  
120 x 80 x 10 ... 330 x 80 x 10 mm



**HPRS**  
various types available, also for mounting on heat sink, Ip54  
Power rating:  
on demand  
Resistance range:  
0R3 ... 30K  
Tolerance:  
±5% ... ±10%  
Dimensions: L x W x H  
on demand

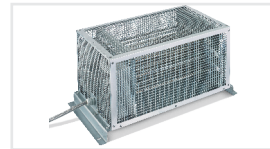


**KSPR**  
flat casing, pulse resistant, Ip65  
Power rating:  
100 ... 600 W  
Resistance range:  
R12R ... 680R  
Tolerance:  
±1% ... ±10%  
Dimensions: L x W x H  
110 x 80 x 15 ... 350 x 72 x 15 mm



**KRX27-8**  
with flat-pin-plugs  
Power rating:  
20 ... 75 W  
Resistance range:  
R15 ... 51K  
Tolerance:  
±1% ... ±10%  
Dimensions: L x W x H  
47.6 x 19 x 19 ... 163.5 x 22 x 19 mm

### HOUSED UNITS



**RHGS**  
tubular resistance elements, touch-protected, Ip20,  
at the electrical connection area up to Ip54  
Power rating:  
2 ... 10 kW  
Resistance range:  
on demand  
Tolerance:  
±5% ... ±10%  
Dimensions: L x W x H  
688 x 330 x 295 mm



**HWG / KABR**  
encapsulated resistors in a housing, touch-protected  
Power rating:  
100 ... 2000 W  
Resistance range:  
on demand  
Tolerance:  
±5% ... ±10%  
Dimensions: L x W x H  
245 x 70 x 95 ... 445 x 300 x 120 mm



**KCBRS**  
low cost brake resistors in a housing, touch-protected  
Power rating:  
500W ... 12KW  
Resistance range:  
on demand  
Tolerance:  
±5%...±10%  
Dimensions: L x W x H  
250 x 120 x 112 ... 500 x 250 x 475 mm

### CEMENT COATED RESISTORS



**KSA**  
with axial wire leads  
Power rating:  
3 ... 15 W  
Resistance range:  
R15 ... 91K  
Tolerance:  
±1% ... ±10%  
Dimensions: L x W x H  
12 x 4 ... 62 x 9 mm



**ZK**  
with end caps  
Power rating:  
16 ... 190 W  
Resistance range:  
R47 ... 330K  
Tolerance:  
±2% ... ±10%  
Dimensions: L x W x H  
55 x 13 ... 265 x 24 mm



**KSR**  
with radial tabs (and lug) with adjustable lugs possible  
Power rating:  
6 ... 1500 W  
Resistance range:  
R62 ... 620K  
Tolerance:  
±5% ... ±10%  
Dimensions: L x W x H  
45 x 9 ... 330 x 36 mm

# KWK Resistors India Private Limited

## Power resistors for various industries



**ZDFA**  
with lugs or plug-type connections  
Power rating:  
30 ... 100 W  
Resistance range:  
4R7 ... 82K  
Tolerance:  
±5% ... ±10%  
Dimensions: L x W x H  
50 x 10.5 x 30 ... 500 x 22 x 72 mm

### VITREOUS ENAMELLED RESISTORS



**GLD**  
with axial wire leads  
Power rating:  
9.5 ... 24.5 W  
Resistance range:  
R24 ... 82K  
Tolerance:  
±2% ... ±10%  
Dimensions: L x W x H  
18 x 6.5 ... 50 x 11 mm



**GK**  
with end caps  
Power rating:  
20 ... 250 W  
Resistance range:  
2R2 ... 330K  
Tolerance:  
±2% ... ±10%  
Dimensions: L x W x H  
55 x 13 ... 265 x 24 mm



**GS**  
with radial tabs  
Power rating:  
15 ... 500 W  
Resistance range:  
R10 ... 300K  
Tolerance:  
±5% ... ±10%  
Dimensions: L x W x H  
45 x 9 ... 330 x 36 mm



**GSB**  
with corrugated band or wire with adjustable lugs GSB...V  
Power rating:  
150 ... 500 W  
Resistance range:  
R15 ... 270K  
Tolerance:  
±5% ... ±10%  
Dimensions: L x W x H  
100 x 30 ... 330 x 30 mm



**RW**  
with radial lugs (acc. to MIL-R-26)  
Power rating:  
11 ... 480 W (11 ... 240 W)  
Resistance range:  
R39 ... 300K (5R6 ... 91K)  
Tolerance:  
±5% ... ±10%  
Dimensions: L x W x H  
25.4 x 15.1 ... 304.8 x 33.3 mm

### CERAMIC POWER RESISTORS



**KRGG**  
in ceramic casing, vertical mounting  
Power rating:  
2 ... 10 W  
Resistance range:  
R20 ... 8K0  
Tolerance:  
±5% ... ±10%  
Dimensions: L x W x H  
20 x 11 x 7 ... 35 x 14 x 13 mm



**KST**  
in ceramic casing, with flat plug, soldering connections or radial wire leads  
Power rating:  
15 ... 30 W  
Resistance range:  
R18 ... 75K  
Tolerance:  
±5% ... ±10%  
Dimensions: L x W x H  
50 x 13 x 13 ... 100 x 13 x 13 mm



**KRX**  
in ceramic casing with radial leads  
Power rating:  
3 ... 20 W  
Resistance range:  
R20 ... 36K  
Tolerance:  
±5% ... ±10%  
Dimensions: L x W x H  
63.5 x 12.5 x 12.5 ... 90 x 19 x 19 mm

### RESISTIVE LOAD BANKS



#### CUSTOM LOAD BANKS

##### FEATURES

- UPTO 500KW
- AC/DC
- OPTIONAL METERING
- MULTIPLE STEPS
- TEMPERATURE CUT OFF



#### STANDARD LOAD BANKS

##### VARIETIES

- ALPHA 1KW 230VAC
- ALPHA 3KW 230VAC
- ALPHA 5KW 230VAC